



**CROWN CHAINS**

01845 525511

[sales@crowncchains.com](mailto:sales@crowncchains.com)

[crowncchains.com](http://crowncchains.com)

## DATA SHEET: CEMENT MANUFACTURING CHAIN

**Cement clinker is probably one of the most severe and aggressive materials to handle by chain conveyor and chain elevators. Crown Chains has a product that's ideal for handling hot clinker from the coolers.**

### Forged link single strand chain with welded scraper flights

Typically using 21640 LAGOS style link with digging style scraper bars. Links in 20MnCr5 alloy steel case hardened 57 - 60 HRC

Chain pins are commonly fitted flush with sides of link held in place with snugs.

### Forged link twin strand chain with bolted scraper flights

Typically using 250mm and 260mm pitch forged link chains. Links in 20MnCr5 case hardened 57 - 60 HRC.

Chain pins commonly with dead one end and opposite with collars

### Cast Link DRAG type chains

Commonly cast in X120MN13 11 -14 % manganese steel with alloy steel chain pins induction hardened. These chains ranging from 150mm pitch up to 400mm pitch and widths from 200mm up to 800mm are designed to handle high loads and high temperatures.



### Heavy Duty welded series drag chain.

A new generation of chain designed specifically for cement clinker applications. This welded steel option was developed as an alternative to the traditional cast manganese drag link chains and can in a lot of cases be retrofitted.

Being of a fabricated construction with welded bush utilising optimum materials and heat-treated to ensure good resistance to shock, loading and extended service life.

Interference fit between the pins and chain sidebars dramatically improves chain strength and joint wear life compared to the traditional cast link chain. Chain pins are induction hardened.

Square edges on the scraper flights and sidebars conveys more efficiently than rounded cast edges and moves a deeper bed of material. These chains are available in pitch size 6" up to 9" and scraper widths from 8" up to 30".



### High Capacity bucket elevator chain

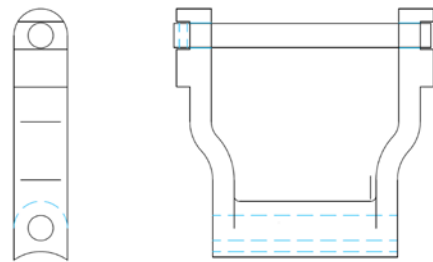
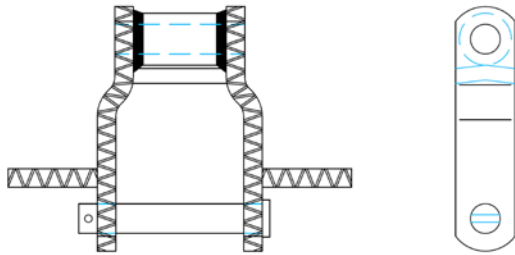
Single strand Chains. Commonly employing 6" - 7" pitch engineered steel bush chain 470kN up to 1100kN UTS with integral attachments to suit elevator buckets .

These chains normally run on plain rim head shaft friction/traction wheels with toothed wheels on the tail.

Tensioning is commonly by internal gravity box.

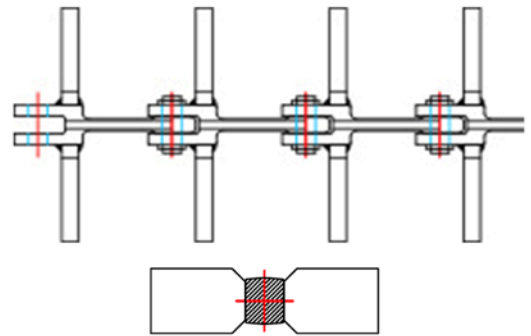
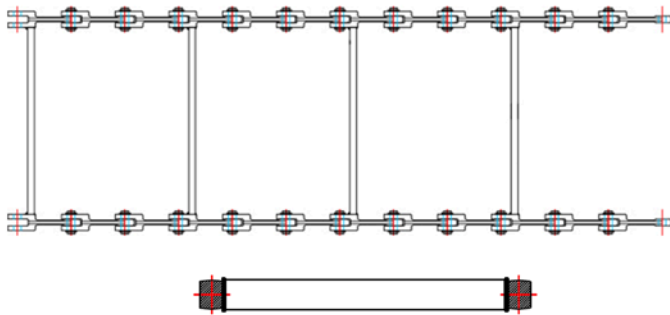
## Double strand Chains

Commonly employing 150mm pitch to 400mm pitch engineered steel roller chains from 200kN to 2600kN UTS with G type bucket attachments and K type attachments. More popular now in pre lubricated sealed joint design. This seal design keeps grease in and the abrasive materials out of the chains joints to significantly improve chain life.



### Welded Steel Drag Chain

### Cast Link Drag Chain



### Forged Double Strand Scraper Chain

### Forged Single Strand Scraper Chain



CROWN CHAINS

CROWN CHAINS LIMITED

UNIT G LUMLEY CLOSE, THIRSK INDUSTRIAL PARK, THIRSK YO7 3TD  
01845 525511 SALES@CROWNCHAINS.COM CROWNCHAINS.COM



UK OFFICIAL DISTRIBUTOR FOR MCV